

PaX-i3D Green Premium

Multi-modality CBCT, most comprehensive set of FOV sizes collimated from 21x19 down to 8x8, to provide a whole array of diagnostic tools to the discerning clinicians

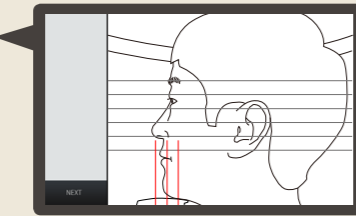
VATECH's new premium solution, PaX-i3D Green Premium

It all starts with Design

Comfort and safety starts with keeping patients and user in mind from the initial design phase. Everything about the device was designed from ground up to be user-centric.

Simple Patient Positioning

The step-by-step description of patient positioning shown on the LCD control panel aids in patient positing.



Space Efficiency

Built in accessory box to reduce clutter and keep the space organized.

Greater Posture Stability

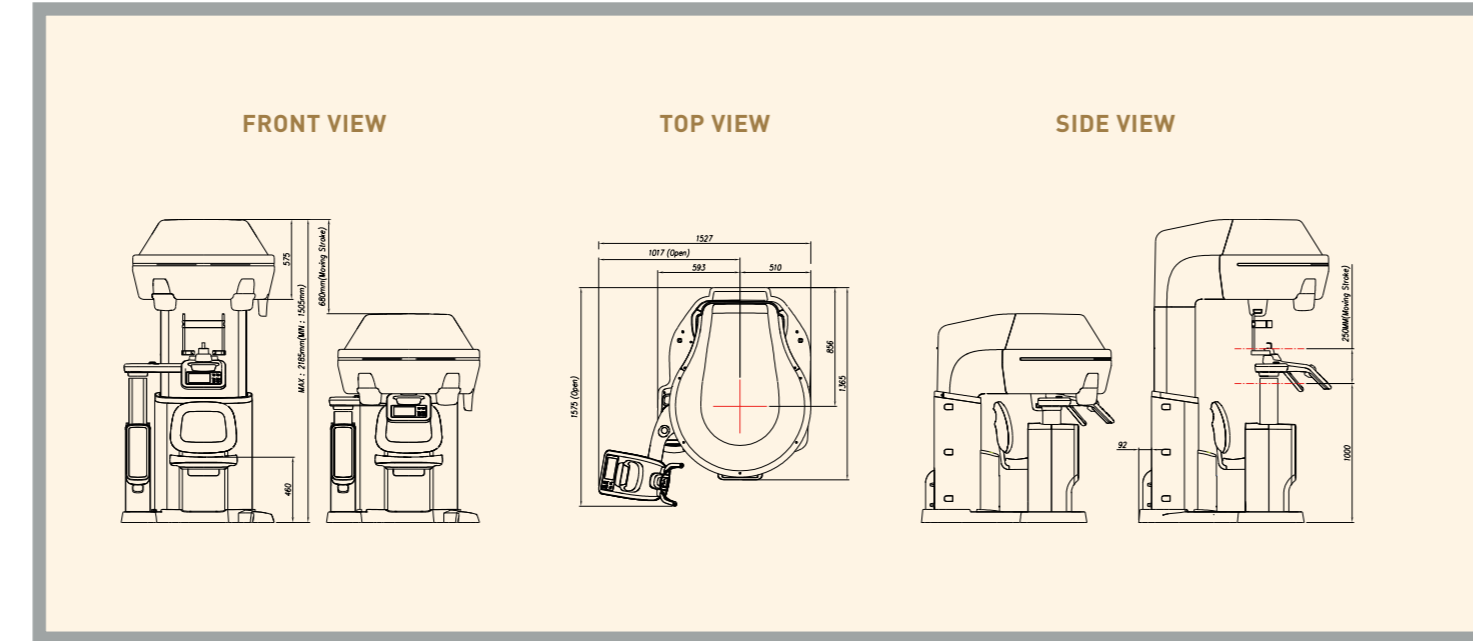
Maximize posture stability by utilizing a seated chair.

Wheelchair Accessible

Detachable Chair to accommodate wheelchair Access.



Dimensions [Unit: mm]



Specifications [PaX-i3D Green Premium : PCT-90LH]

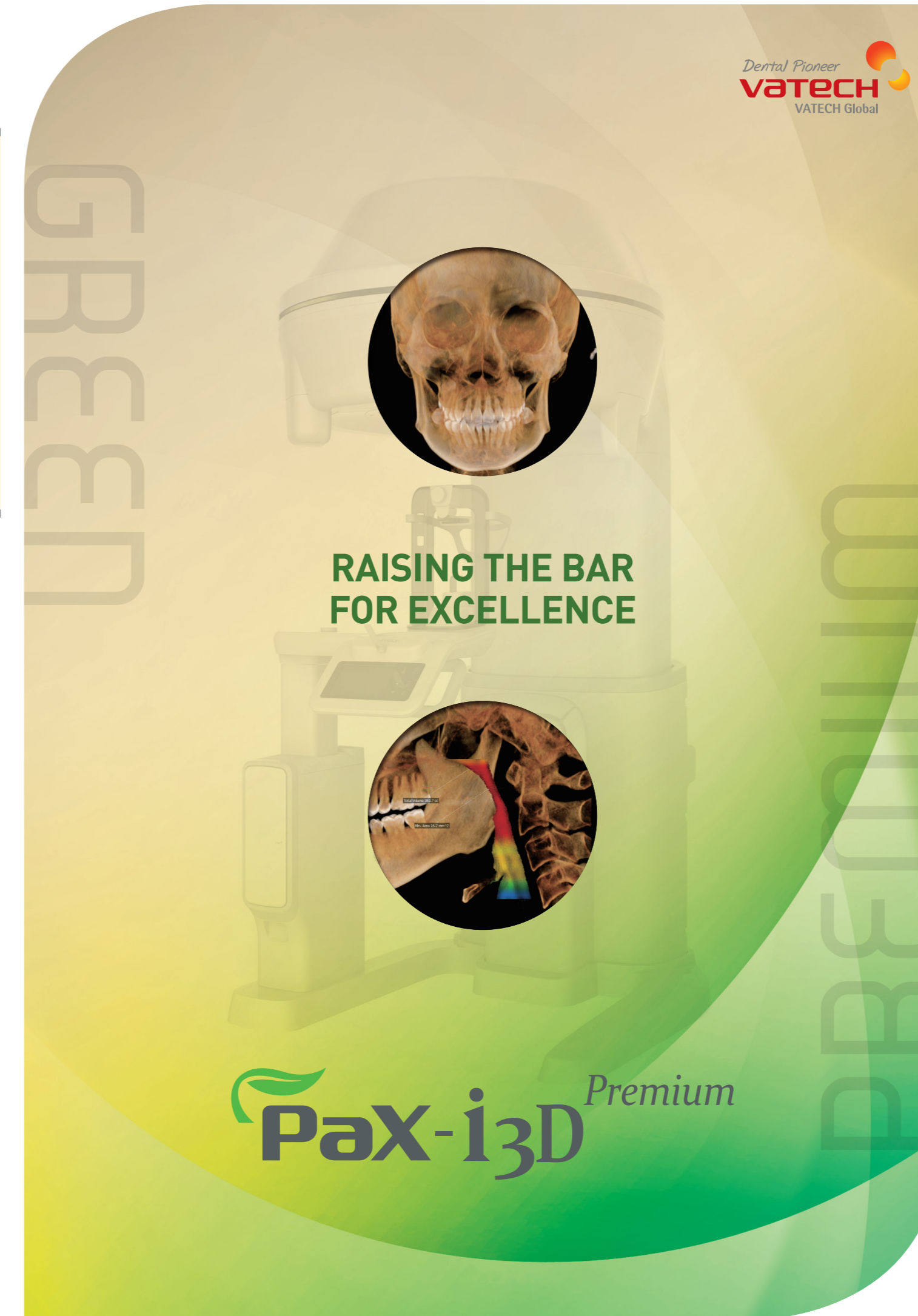
Function	CT [Auto Pano/Auto Ceph] + Pano + i-Ceph* + 3D Photo	
CT FOV Size	Dental	21 x 19 · 17 x 15 · 12 x 9 · 8 x 8
	ENT	21 x 19 · 17 x 11[TB&PNS] · 17 x 11[Airway]
Scan Time (sec)	Pano	13.5
	CT	Max. 18
	i-Ceph	18
Voxel Size (mm)	0.2 · 0.3 · 0.4	
Focal Spot Size	0.5 mm [IEC60336]	
Gray Scale	14 Bit	
Tube Voltage	60 - 120 kV	
Current	4 - 10 mA	
Weight	321 kg [708 lbs]	
Dimensions	1575[L] x 1527[W] x 2185[H] mm	

* i-Ceph provides X-ray image similar to Ceph at lower dose than a CT.

• i-Ceph & 3D Photo functions are optional.
• The specifications are subject to change without prior notice.



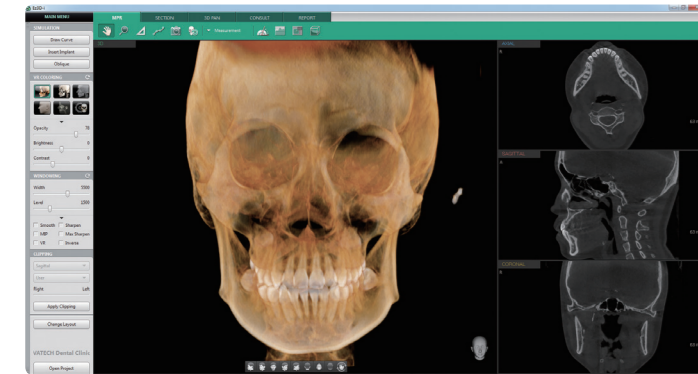
13, Samsung 1-ro 2-gil, Hwaseong-si, Gyeonggi-do, Korea, 445-170
sales@vatechglobal.com <http://www.vatechglobal.com> 2016 / 03



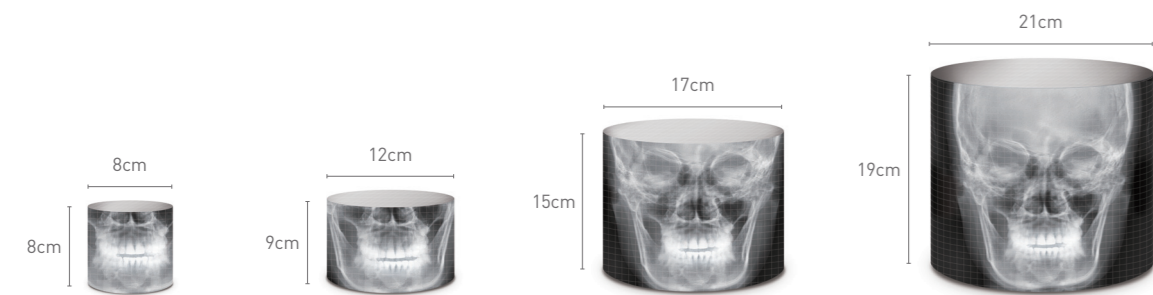
Most **suitable FOV** size for diagnosis

21x19 is an optimal size for Oral Maxillofacial Surgeons and Orthodontists. Anatomically, it captures the regions from the roof of the orbits and nasion down to the hyoid bone.

- ✓ Oral and maxillofacial surgery
- ✓ Facial reconstructions
- ✓ Orthodontic treatment planning
- ✓ Complex orthognathic cases



PaX-i3D Green Premium utilizes a 49.5µm high resolution X-ray sensor. With the latest 49.5µm pixel pitch X-ray sensors, it is the finest pixel/highest resolution dynamic X-ray sensor for CBCT available on the market today.



[Multi FOV]

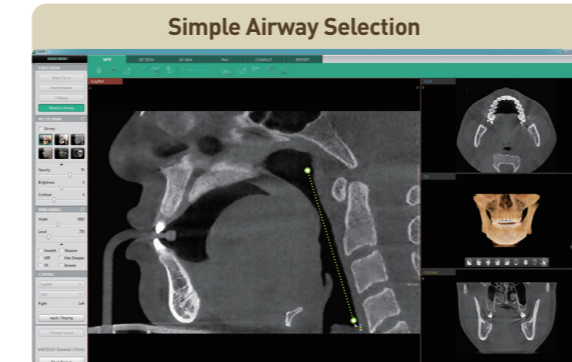
PaX-i3D Green Premium offers a wide range of selectable Fields of View(FOV). The multi FOV helps to limit the patient radiation exposure to a Region of Interest(ROI). Clinicians can select the proper FOV size among 21x19, 17x15, 12x9, 8x8 based on a particular diagnostic need.



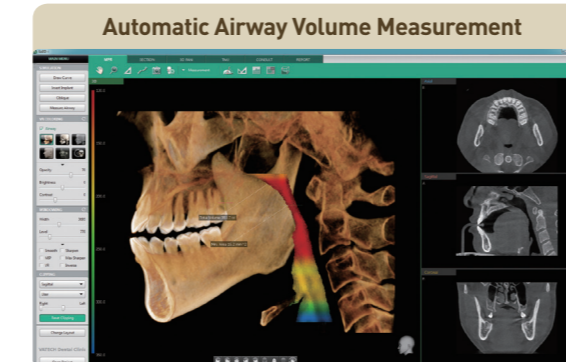
The optimal solutions for **ENT diagnosis**

PaX-i3D Green Premium provides ENT mode(Airway / TB&PNS) for ENT specialists. The fields of view are set based on patients' most common cases such as cholesteatoma, chronic sinusitis, sleep apnea syndrome. For different diagnostic cases, select the appropriate field of view size.

[Airway] A powerful function for Airway Volume Analysis

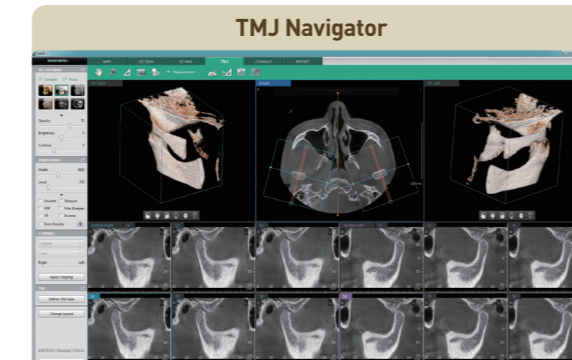


- 2-click airway region selection

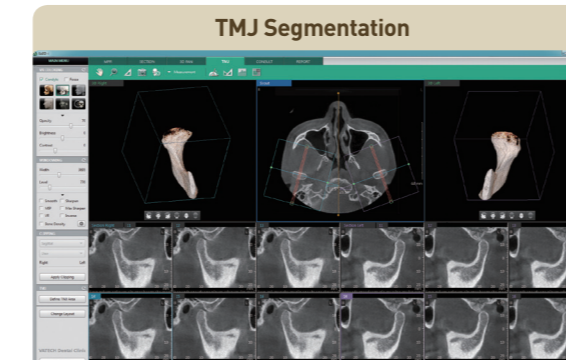


- Segmented airway volume and color coded thickness measurements
- Automatically calculated total volume and minimum area measurements

[TMJ] Simultaneous Analysis for both TMJ



- Instant auto cross-sectional images



- Separate condyle or fossa
- Rotation for an accurate diagnosis

* Airway & TMJ analysis available on Ez3D-i V4.1

Powerful diagnostic value with **1 Scan 6 Images**

One scan with a PaX-i3D Green Premium creates CBCT, Auto Pano, Auto Ceph[PA], Auto Ceph[Lateral], Auto Ceph[SMV] and Auto Ceph[Waters' view]. The system provides the images for craniofacial, maxillofacial and orthodontic treatment cases with one scan. It enables rapid and comprehensive image acquisition for a complete diagnostic application. Since the Auto images are created automatically from the 2D projections of the RAW data, there is no need to manually reconstruct the images, and the 2D images that are produced which most practitioners are familiar with.

Value-added Auto Image Selection



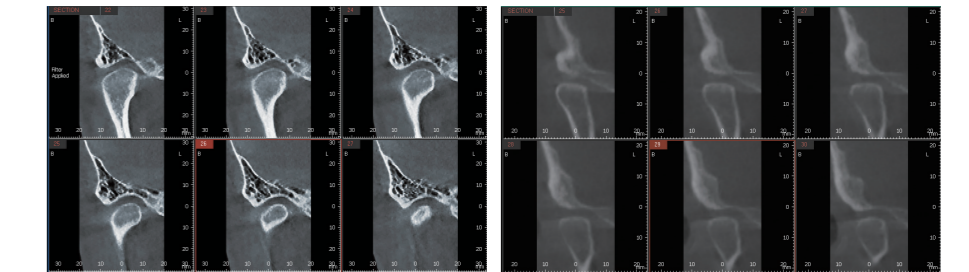
Select the Auto images that you need for your treatment.



* Conventional Panorama mode is included.

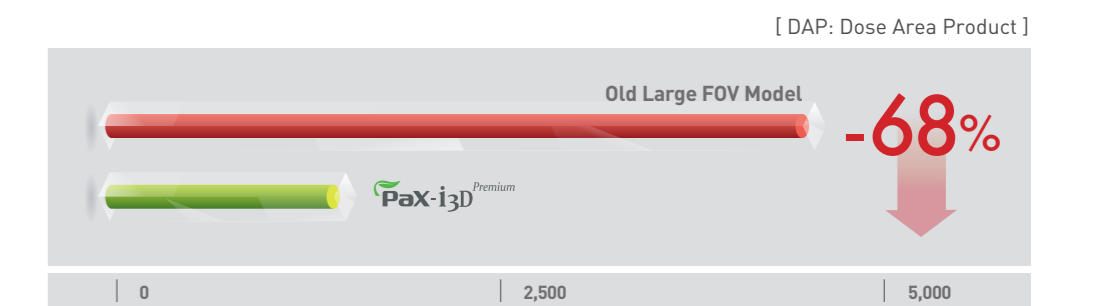
Large Field of View and **Low Dose** imaging

68% reduction in dose yet clinically diagnosable scans



PaX-i3D Green Premium Ultra Low Dose Mode FOV 21x19

Old Large FOV Model Standard Mode FOV 24x19



What has been developed at VATECH breaks many conventions in dental radiography. It was always believed that with low radiation comes inferior image quality, which renders it useless in clinical diagnosis.

However, PaX-i3D Green Premium provides clinically diagnosable X-ray scans at a low X-ray dosage. With low dose X-ray radiography, achieving clinically diagnosable image quality is the new golden-standard.



As the pioneer of the Green CT, VATECH's Green technology reduces the radiation level of the PaX-i3D Green Premium without reducing image quality.