

DEXIS IXS™

Your imaging workhorse

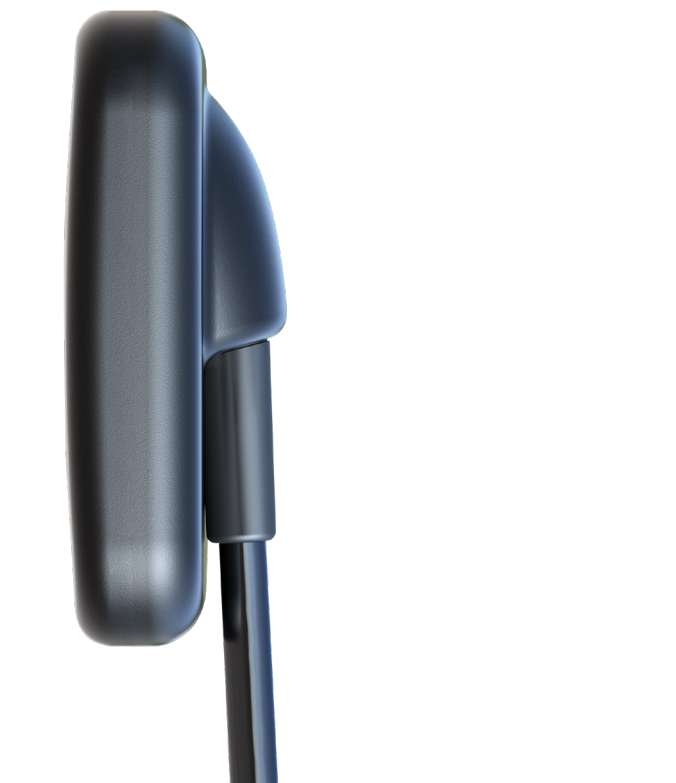


Simply a higher standard.

DEXIS IXS digital intraoral X-ray sensors work hard for you so you can focus on your patients. Backed by a long-standing commitment to quality, DEXIS products are engineered at the highest standards for product testing, integrity and reliability.



Put DEXISTough™ to the test.



Impact-resistant housing

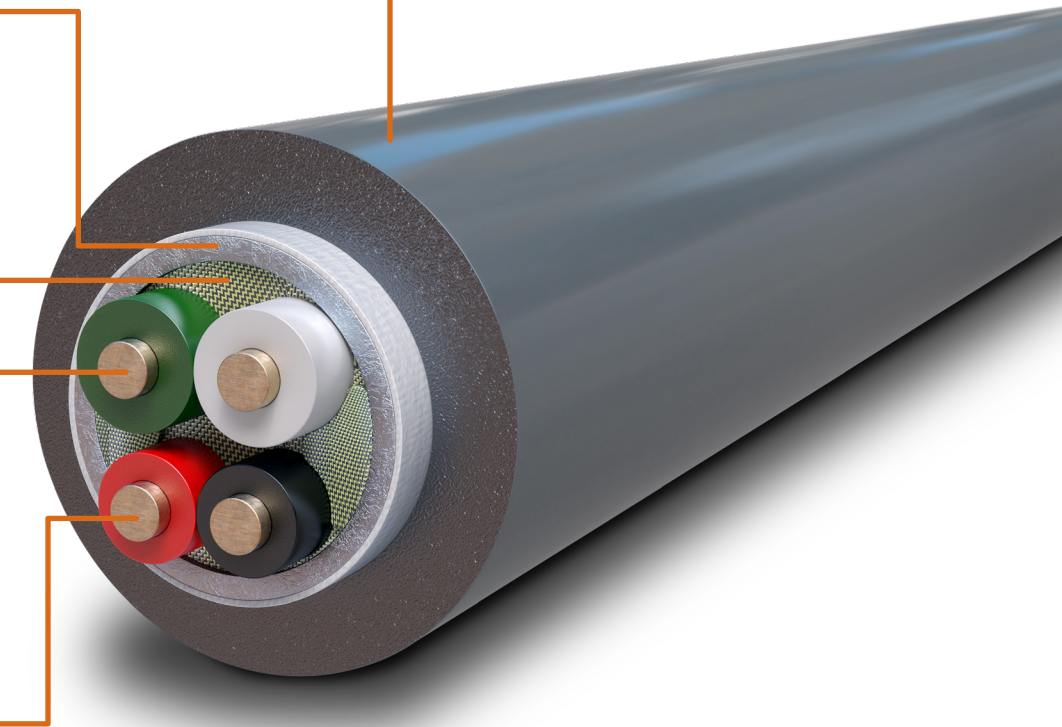
The rugged, resilient housing features a thermoplastic resin coating, which makes DEXIS IXS more resistant to cracks and breakage. Featuring a proprietary dome surface design, DEXIS IXS sensors are engineered and proven to withstand significant stress or pressure*.

*As compared to DEXIS Platinum sensor. Data on file.

DEXISTough™ — Where reliable performance meets durable design.

With DEXIS IXS, every component has a purpose. Built to last, your DEXIS IXS system is your personal X-ray acquisition workhorse.

- 1 The durable inner jacket protects the inner components of the cable, making it more resistant to bite force and accidental harsh events.
- 2 Copper alloy shielding protects high speed USB communication from interference.
- 3 Kevlar®-reinforced strands increases bend cycle, helping to extend life of cable.
- 4 Advanced signal and signal-return wires help to improve communication between your device and your computer.
- 5 Durable power and power-return wires help keep your device operating at optimum charge.



Resilient cable components

The innovative composition of the DEXIS IXS cable features a powerful sensor-to-cable connection that helps to eliminate connectivity issues. Directly fused to the USB housing, the external jacket offers robust protection from twisting, tugging, and other external forces such as bite pressure.

Inner strength

A copper alloy shield protects the internal components of the sensor. Kevlar®-reinforced strands pad the cable jacket for added durability and resilience to withstand your practice's most demanding day.

SimplySmart™ — Advanced sensor technology, simplified.

Adding new sensors to your practice can often come with its own set of challenges—but not anymore. Packed with intuitive SimplySmart innovations, DEXIS IXS makes reliable, durable sensor technology readily available and easy to use.

The SimplySmart choice.

Built-in compatibility

DEXIS IXS works seamlessly with the most popular image acquisition and practice management software. No need to purchase or learn new imaging systems.

Ready-to-go

Upon your first use of DEXIS IXS, your software will seamlessly upgrade to the latest version to ensure you are ready-to-go instantly.

Calibrate with ease

DEXIS IXS calibration files are saved automatically onto your system without any setup from you and your staff.

Seamless routine updates

DEXIS IXS software and any associated updates can be automatically pushed to your computer. No downtime while you update. No need to manage discs or thumb drives. No calling tech support for help. Up-to-date and ready to go, always.

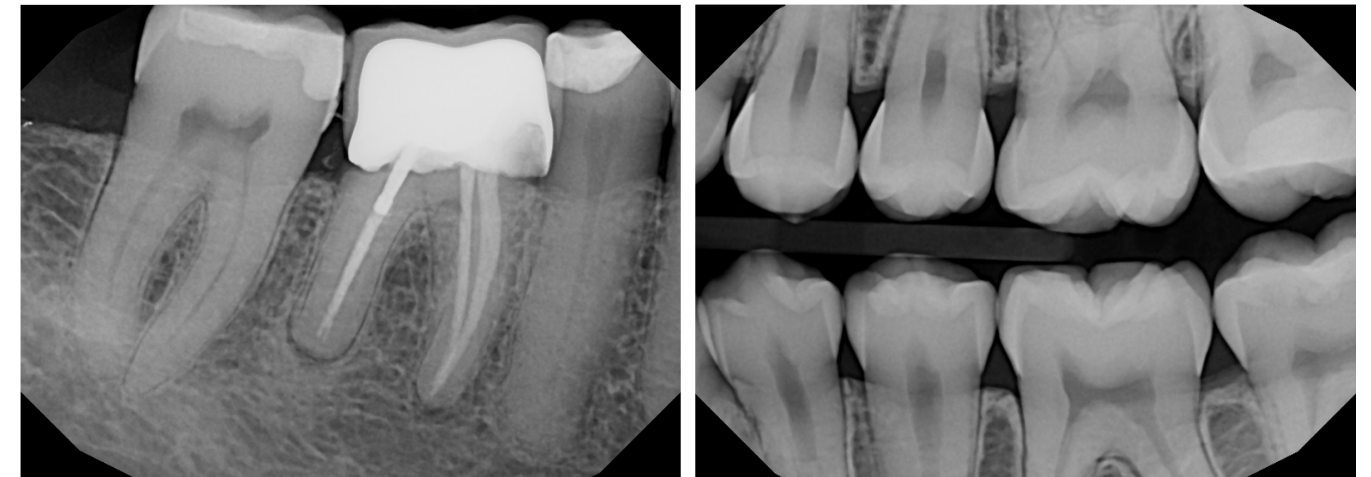


DEXIS IXS is compatible with DTX Studio™ Clinic. Connecting treatments from beginning to end, DTX Clinic suite is the single software interface for all your digital dental needs.

Sharp images. Sharp diagnostics.

DEXIS IXS surpasses low-cost sensors in image clarity, sharpness, and detail—often at lower exposure settings. Delivering crisp, clear images, DEXIS IXS helps you to provide confident, accurate diagnoses to your patients.

Image quality enhancements.



Improved contrast

DEXIS IXS captures consistent images with improved contrast between various radiodensities, across a broader spectrum of radiation levels.

Less noise, more detail

DEXIS IXS delivers a high contrast-to-noise ratio. A clearer, cleaner, more defined radiograph reveals imperative details about your patient's dental health, for confidence in diagnosis and treatment planning.

Dose flexibility

With dynamic dose range, DEXIS IXS consistently captures clear radiographs at a wide range of exposure settings. Trust that DEXIS IXS will produce consistently clear images, even on low-dose settings.

DEXIS RiteSize™ — The right fit for any patient.

DEXIS RiteSize ensures a more comfortable fit for patients of any size. With two sensor sizes to choose from—size 1 and size 2—DEXIS IXS is customizable to adult patients, children, patients with tori, and more.

Exclusive sensor health data.

To create the best owner experience, we have developed a new system to gather data for your DEXIS IXS sensors health to help keep your practice running smoothly and minimize downtime.

Opt-in to DEXIS Connect today for easy sensor installation and automation.



RiteSize—Putting your patients at ease.

No pointed edges

The anatomical design of DEXIS IXS features smooth, generously rounded corners and edges. Constructed to fit more comfortably inside your patient's mouth, DEXIS IXS is easy to place intraorally for any clinician.

Low-profile cable

Housed in a small, sloped dome, the ultra-thin cable is easy for patients to tolerate and practitioners to position. The smaller cable design allows the patient greater closure, increasing the amount of viewable anatomy captured on your image.

Light weight

The portable USB design eliminates the need for external components on the cable, reducing weight and patient jaw fatigue.



Close fit

Featuring a unique ergonomic shape, DEXIS IXS sensors can be easily placed closer to the patient's anatomy for more efficient and accurate image capture.

Choose your accessories

DEXIS IXS sensors come with custom designed accessories, made to fit perfectly. These specially designed holders allow the cables to exit without extreme bending, which can often damage the sensor and impact signal transmission.

Compatible with industry standard positioning systems, DEXIS IXS can also be used with the accessories of your choice.



Technical specifications.

| | DEXIS IXS child sensor (size 1) | DEXIS IXS std sensor (size 2) |
|---------------------------------------|---|---|
| Dimensions | 25.2 x 37.0 mm | 30.4 x 42.3 mm |
| Active area | 20.2 x 30.1 mm | 26.0 x 36.0 mm |
| Pixel size | 19.5 μm | 19.5 μm |
| Number of pixel | 1.6M (1026 x 1539) | 2.4M (1324 x 1842) |
| Resolution | Theoretical: 25.6 lp/mm Visible: 20+ lp/mm | Theoretical: 25.6 lp/mm Visible: 20+ lp/mm |
| USB port | USB 2.0 / USB 3.x | USB 2.0 / USB 3.x |
| Cable length/ diameter | 2.5 m / 3 mm | 2.5 m / 3 mm |
| Cable material | Kevlar® reinforced | Kevlar® reinforced |
| Driver | DEXIS_IO-Sensor 1.5 or higher | DEXIS_IO-Sensor 1.5 or higher |
| Sensor technology | Enhanced CMOS (Csl scintillator + optical fibers) | Enhanced CMOS (Csl scintillator + optical fibers) |
| Mfg. warranty | 1 year, unconditional | 1 year, unconditional |
| IoT connectivity | Device health monitoring, automatic SW updates | Device health monitoring, automatic SW updates |
| Device protection/ safe guards | Over current, over voltage, low power | Over current, over voltage, low power |

About DEXIS

DEXIS innovation is nothing new. After all, our recognized, trusted products are built on over 200 years of dental imaging expertise, combining leading brands including i-CAT™, Gendex™, Instrumentarium, SOREDEX™, and NOMAD™ Pro 2. Today, over 150,000 offices trust DEXIS products around the world.

DEXIS now includes a full portfolio of products including CBCT and intraoral scanners, our legacy digital sensors and handheld x-ray system and DTX Studio™ Clinic, the next generation software. This complete digital solution works seamlessly together as well as with other systems to enhance the way you diagnose, plan, and treat patients in your practice. Elevate your patient outcomes with greater confidence — across the patient journey. With DEXIS proven solutions, you'll be able to treat patients from consultation to diagnosis to treatment to surgery and deliver appliances, all with the efficiency that you come to expect with the DEXIS brand you already know.

DEXIS | 450 Commerce Drive | Quakertown PA 18951 | USA | 1-888-88-DEXIS | DEXIS.com

The products, equipment and services illustrated and described in this brochure reflect knowledge at the time of printing. Dental Imaging Technologies Corporation accepts no liability for any deviation from the illustrations in terms of color or shape, or any errors or print errors, and retains the right to make changes to the brochure at any time. Full or partial reprinting is only permitted with permission from Dental Imaging Technologies Corporation. For indications for use, please visit: DEXIS.com

Dental Imaging Technologies Corporation reserves the right to make changes to specifications and features shown herein, or to discontinue the product described at any time without notice or obligation. Contact your local authorized representative for the most current information. Manufactured by Dental Imaging Technologies Corporation.
© Dental Imaging Technologies Corporation. All rights reserved. DX00307/RevB